



RERA REGISTRATION NUMBER
P52100017622

1 & 2 BHK Spacious Homes @ Moshi

<http://maharera.mahaonline.gov.in/>



*Artistic rendition. Actual site may differ.

Thrive in Perfection

- An idyllic home is the gateway to a beautiful life.
- At Utopia, you will find sublime homes that are a harmonious blend of luxury, class and nature.
- With gorgeous homes, lavish modern amenities, superb connectivity and the scenic location of Moshi, Utopia is the ultimate destination for blissful living.



The Ultimate Utopian Destination

Utopia is the quintessential destination for the perfect modern lifestyle.

- Beautiful 1 BHK & 2 BHK homes
- Superb connectivity
- Prime location of Moshi
- Ample and modern amenities and specifications





*Artistic rendition.



*Artistic rendition. Actual site may differ.

Equipped with Perfection



Health, Fitness and Green Zones

- Club House
- Biometric Access to Clubhouse
- Landscape Garden
- Sand Pit
- Children's Play Area
- Senior Citizens Corner Sit Out
- Gym and Indoor Games
- Herbal park
- Acupressure Park
- Jogging Track
- Yoga & Meditation Area

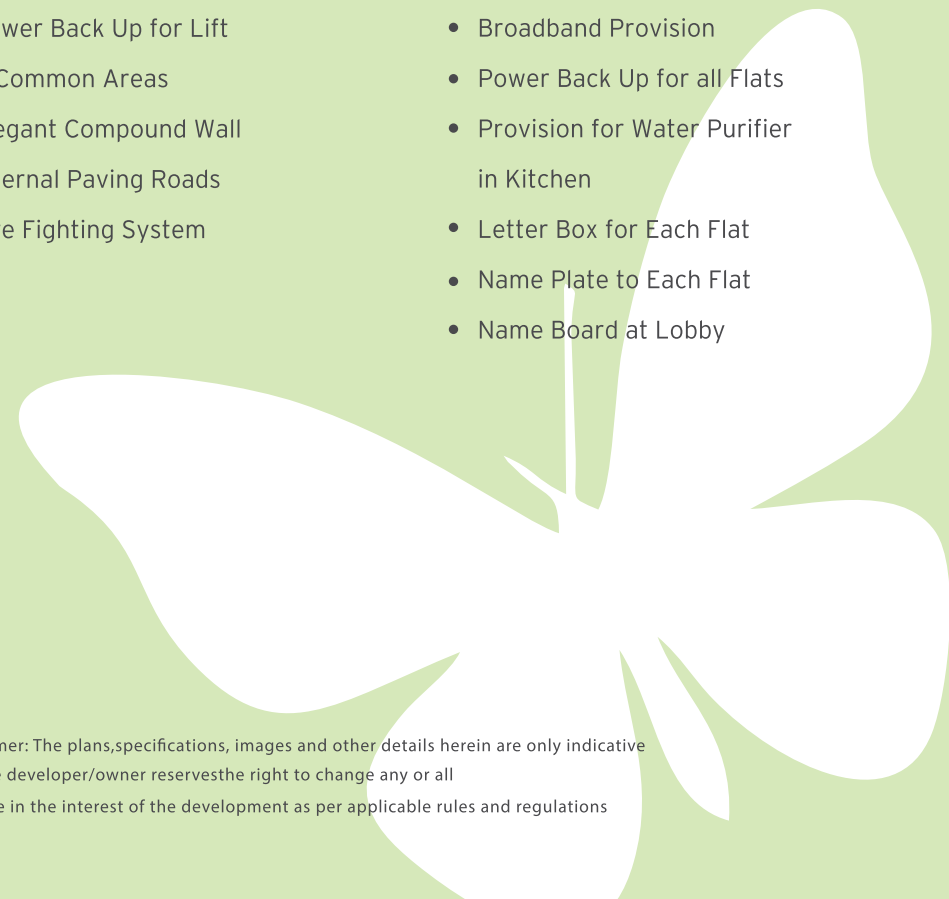
Ambience for Residents

- Amphitheater
- Multipurpose Party Lawn
- Solar Water Heating System
- Rainwater Harvesting
- Designer Entrance Gate
- Decorative Entrance Lobby
- CCTV
- Power Back Up for Lift & Common Areas
- Elegant Compound Wall
- Internal Paving Roads
- Fire Fighting System

Equipped with

- Art Gallery
- Video Door Phone
- Provision for DTH Service to Master & Living Room
- AC Points for entire flat
- Garbage Chute
- Intercom facility
- Broadband Provision
- Power Back Up for all Flats
- Provision for Water Purifier in Kitchen
- Letter Box for Each Flat
- Name Plate to Each Flat
- Name Board at Lobby

Disclaimer: The plans, specifications, images and other details herein are only indicative and the developer/owner reserves the right to change any or all of these in the interest of the development as per applicable rules and regulations



Top Specifications



Structure:

- RCC Framed Structure-Earthquake Resistant
- 6 inch thick all Masonry Wall

Plaster:

- Gypsum Plaster
- Sand Faced Plaster Externally

Doors:

- Attractive Both Side Laminated Main doors with good quality Door fittings for entire flat.
- Granite Frames with FRP Doors for Toilets.
- Internal doors fitted with Cylindrical Locks.

Windows:

- All Windows Full Granite Frame
- Powder Coated Aluminum Windows with Mosquito net.
- Windows with Safety Grills.
- Ample Air Ventilation

Flooring:

- Branded Vitrified 2x2 Tiles.
- Rustic Ceramic in Terrace Area

Kitchen:

- Black Granite Kitchen Platform with SS Sink.
- Dado Designer Tiles till Lintel Level.
- Provision for Water Purifier, Exhaust Fan, Fridge, Oven & Mixer

Common Toilet:

- Counter top Wash Basin
- Designer Wall Tiles up to 7 feet.
- Non Slippery Ceramic Tiles for flooring.
- Concealed Plumbing with Jaquar or Premium Quality CP fittings.
- Branded sanitary ware.
- Granite Door Frames with FRP Doors for Bathroom.
- Hot & Cold Water Mixer Unit
- Electrical Provision for Geyser
- Mirror in All Bathrooms
- Solar Water Connection to Both the toilets

Master Toilet:

- Counter top Wash Basin
- Designer Wall Tiles up to 7 feet.
- Non Slippery Ceramic Tiles for flooring.
- Concealed Plumbing with Jaquar or Premium Quality CP fittings.
- Branded sanitary ware.
- Granite Door Frames with FRP Doors for Bathroom.
- Hot & Cold Water Mixer Unit
- Electrical Provision for Geyser
- Mirror in All Bathrooms
- Solar Water Connection to Both the toilets

Electronics:

- Concealed Copper Wiring in Entire Flat.
- Branded Designer Switches & Sockets.
- AC Points in Living & Bedrooms
- Telephone Point in Living Room.
- DTH Connections in Living & Master Bedroom

Plumbing:

- Concealed Plumbing with Jaquar or Equivalent Fittings in Toilet & Kitchen
- Wall Mounted Commode with Concealed Plumbing
- Plumbing Provision for Water Purifier in Kitchen
- Plumbing Provision for Geyser

Paint:

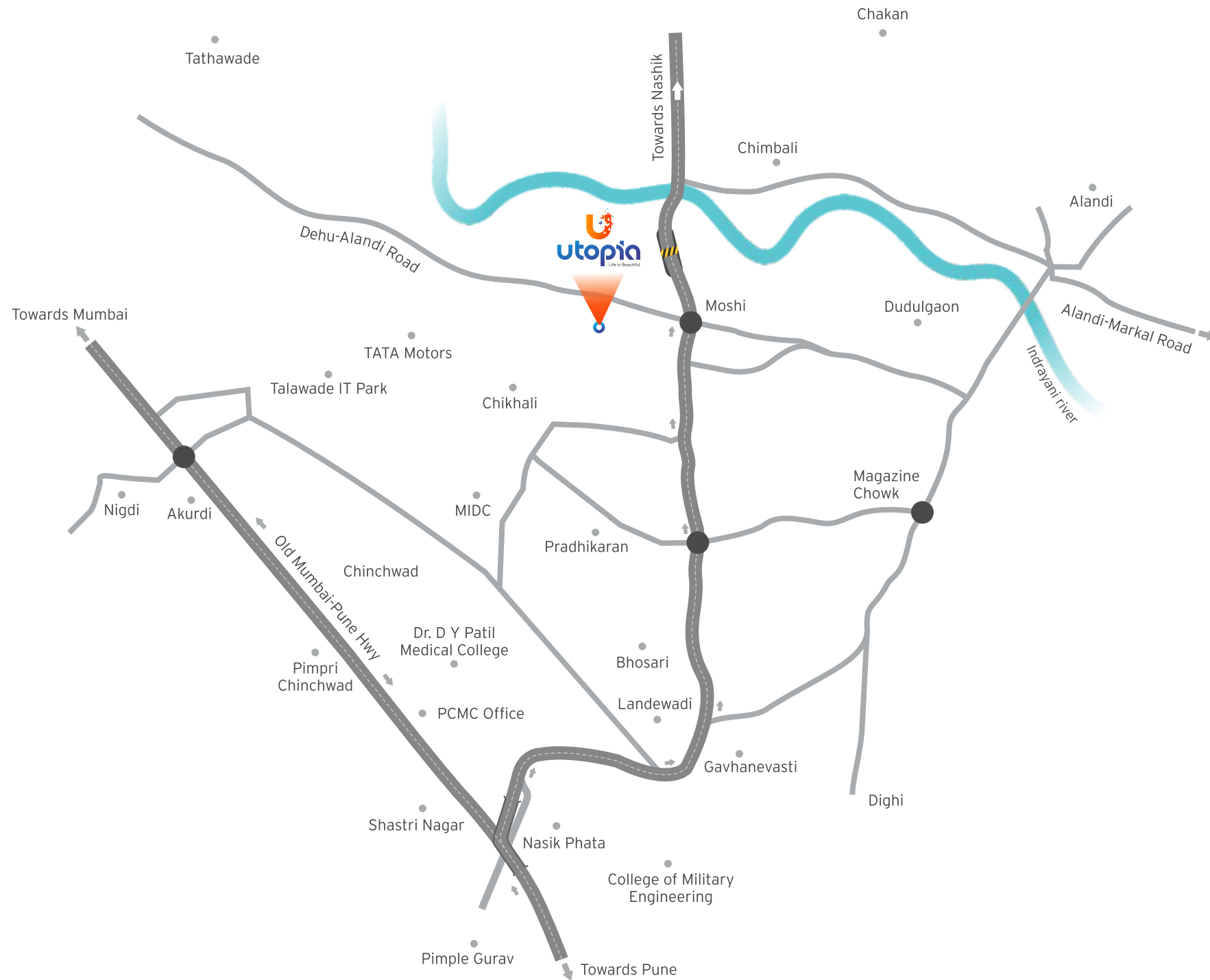
- Semi Acrylic for Internal Walls and Ceiling.
- Acrylic Paint on External Walls.

Terrace & Dry Balcony:

- MS Grill Railing for more safety
- Anti Skid Tiles for Terrace & Dry Balcony
- Electrical & Plumbing Provision for Washing Machine & Dry Balcony



*Artistic rendition. Actual site may differ.



Located to Perfection

Moshi is one of Pune's foremost suburban residential areas and is located in the Pimpri-Chinchwad belt. The locality is well connected to several important areas like Hinjewadi, Lohegaon, Khadki, Nigdi and Bhosari. The Rajiv Gandhi Infotech Park is also well connected to the locality.

MIDC

- Talawade IT Park : 6 Kms
- Chakan MIDC: 15 Kms
- Bhosari MIDC : 6 Kms
- Talegaon MIDC : 20 Kms

Communication

- Chinchwad Railway Station : 8 Kms
- Pune Nashik Highway : 3 Kms
- Mumbai Pune Highway : 7 Kms

Malls

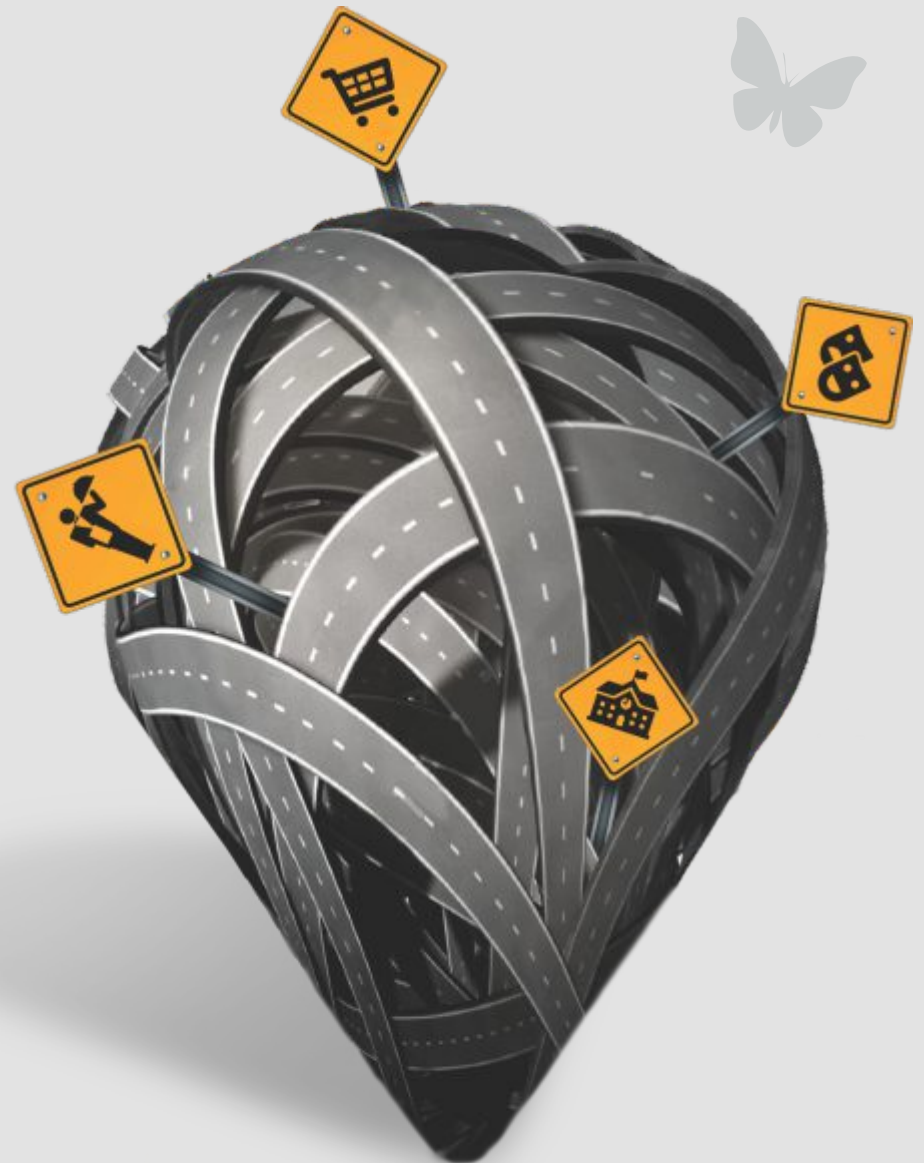
- Big Bazar Chinchwad : 7 Kms
- Central Mall Pimpri : 6 Kms

Entertainment

- PVR Cinema Pimpri : 7 Kms
- Carnival Cinema Chinchwad : 7 Kms
- Vishal Esquare : 7 Kms
- Inox Akurdi : 8 Kms

Schools

- SNBP School : 1.7 Kms
- Global Talent English School : 3 Kms
- Shri Shri RaviShankar Vidya Mandir : 1 Km
- Beacon Highschool : 4 Kms



1 BHK Cut Section



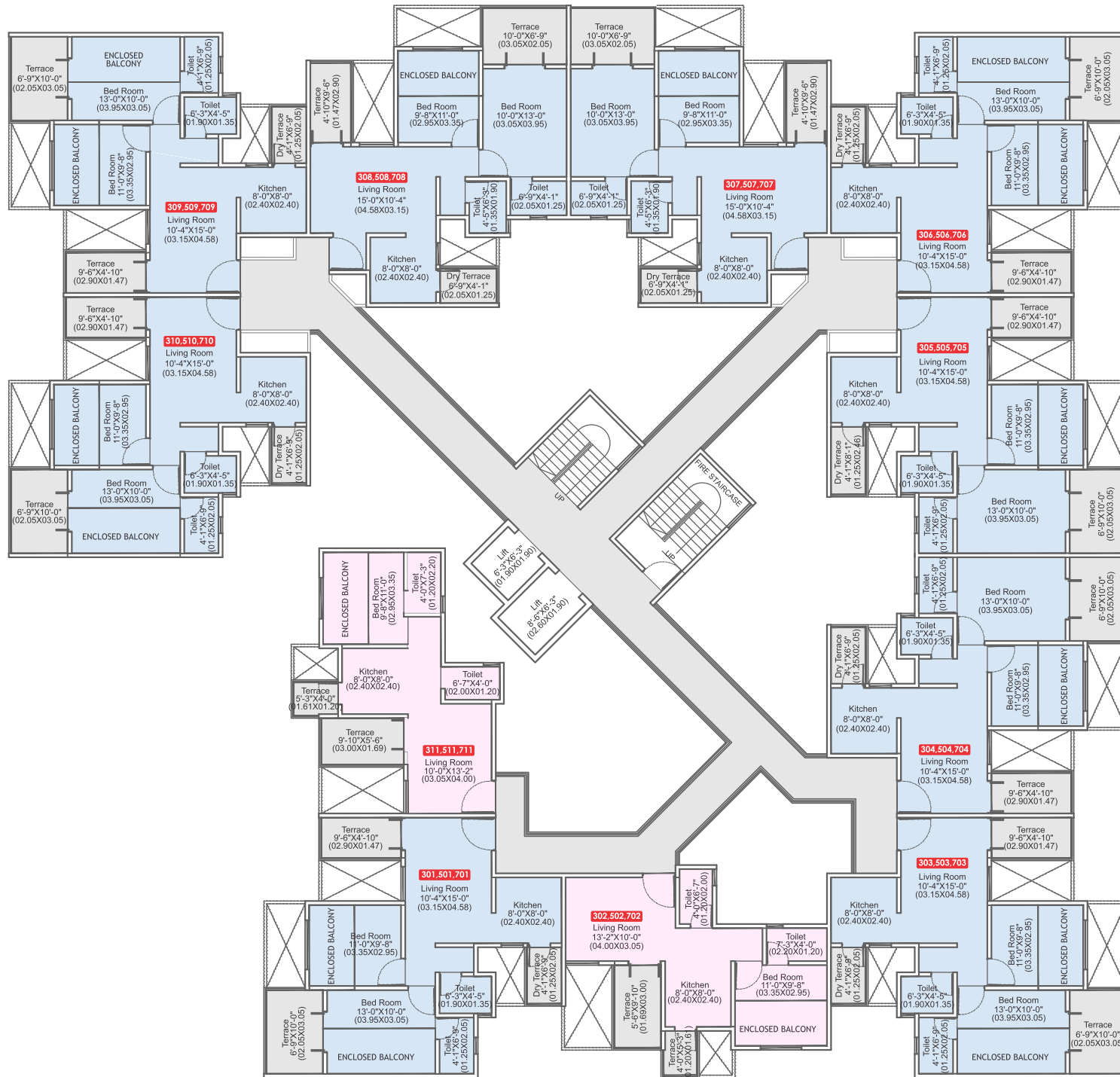
*Artistic rendition. Actual site may differ.

2 BHK Cut Section

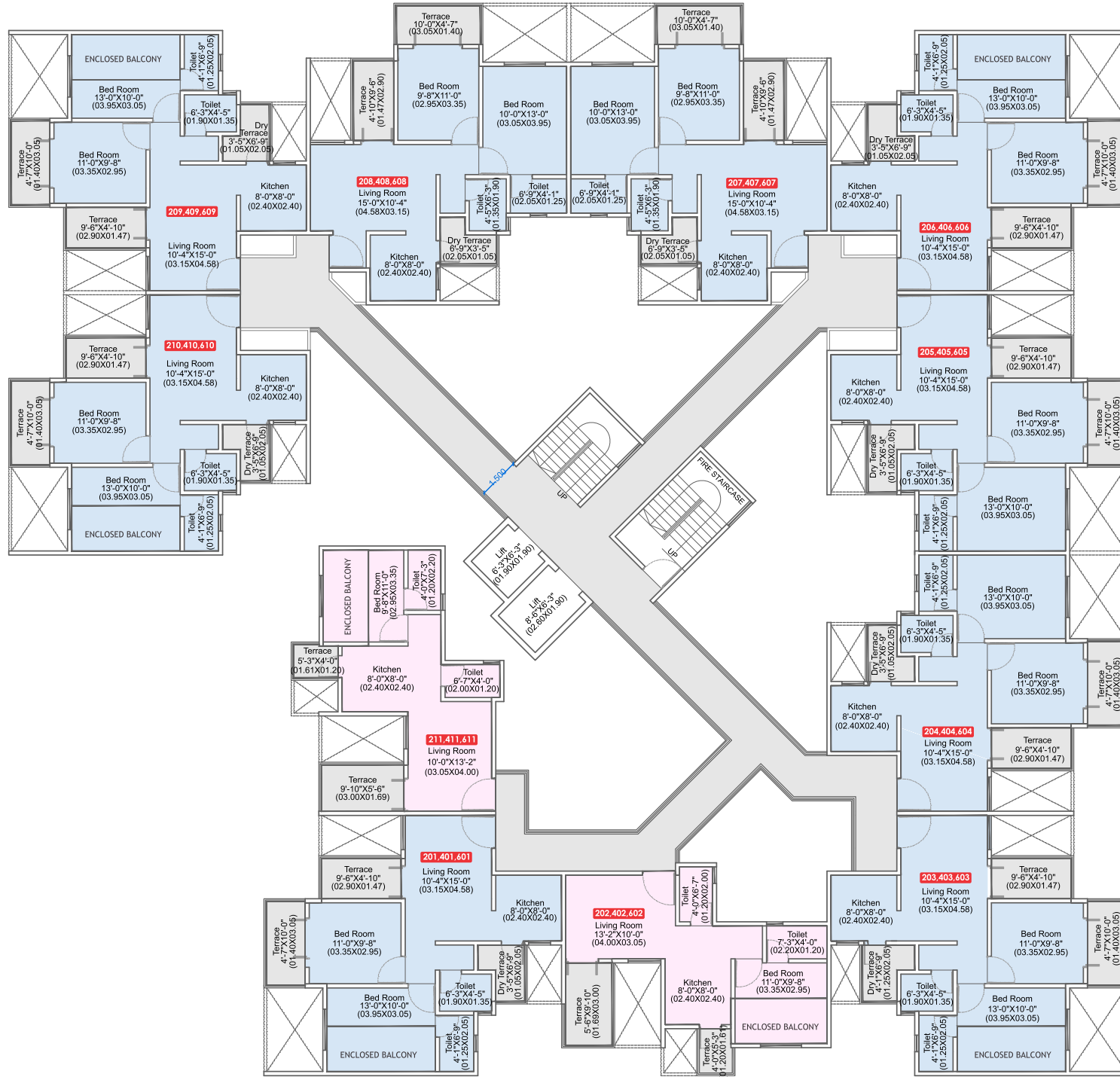


*Artistic rendition. Actual site may differ.

Typical Odd Floor Plan



Typical Even Floor Plan



With an experience of over 20 years, the Shevi Group is a leading name in the Construction & Real Estate Industry with projects that span the residential & commercial spectrum all over Pune.

Meticulous planning, maximum use of modern equipment and building technology, designs that optimize space and quality of interiors contribute to delivering high quality projects in time and within budget, making Shevi Group the preferred choice of home buyers and real estate investors alike.

Whether its premium lifestyles or affordable luxury, every project of the Shevi Group not only meets but exceeds the expectations of their customers.



Site Address:

G. No.129, Next to Millennium Divine, Aher, Borhadewadi,
Moshi, Pune. 412105

Corporate Office :

D Ward 2/1, Behind Punjabi Gurudwara, Near Sai Chowk,
Pimpri, Pune - 411017.

☎ **+91 8888 42 1117 | 788 788 1344/55** | www.shevigroup.com



RERA REGISTRATION NUMBER
P52100017622

<http://maharera.mahaonline.gov.in/>