

atulya
NIRMAN

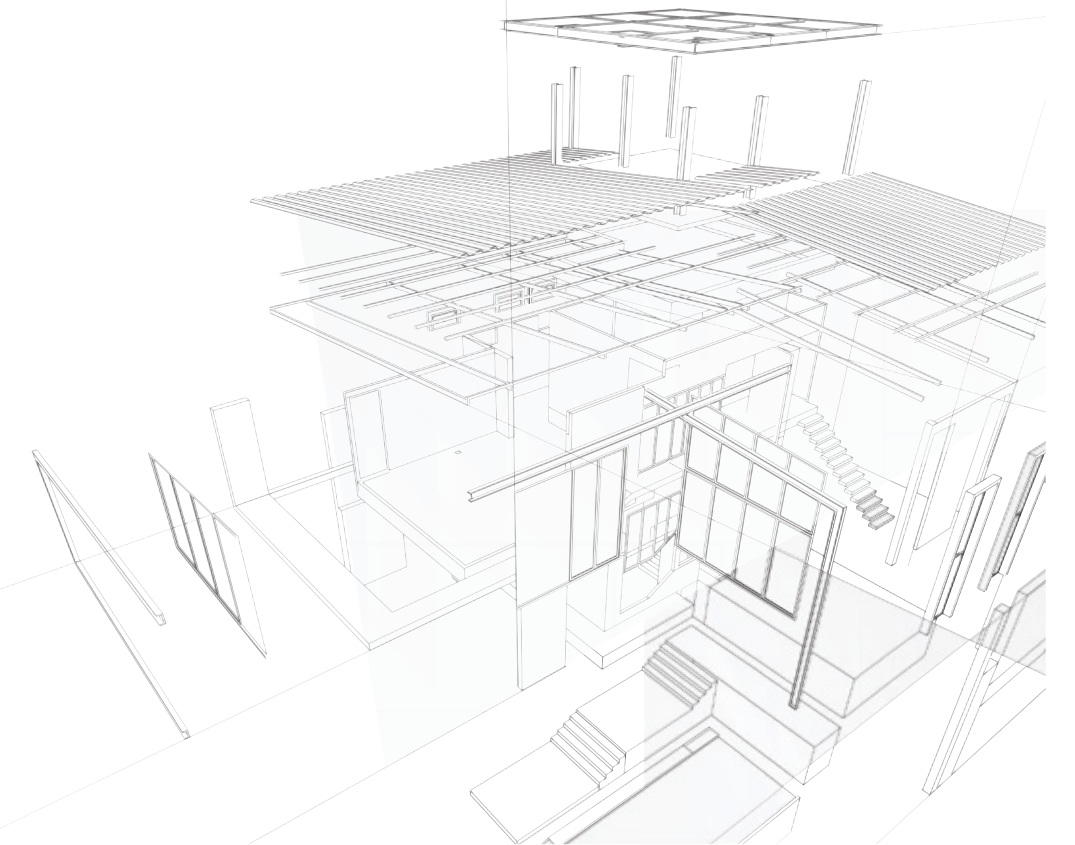
1 & 2 BHK LUSH RESIDENCES
@ PUNAWALE



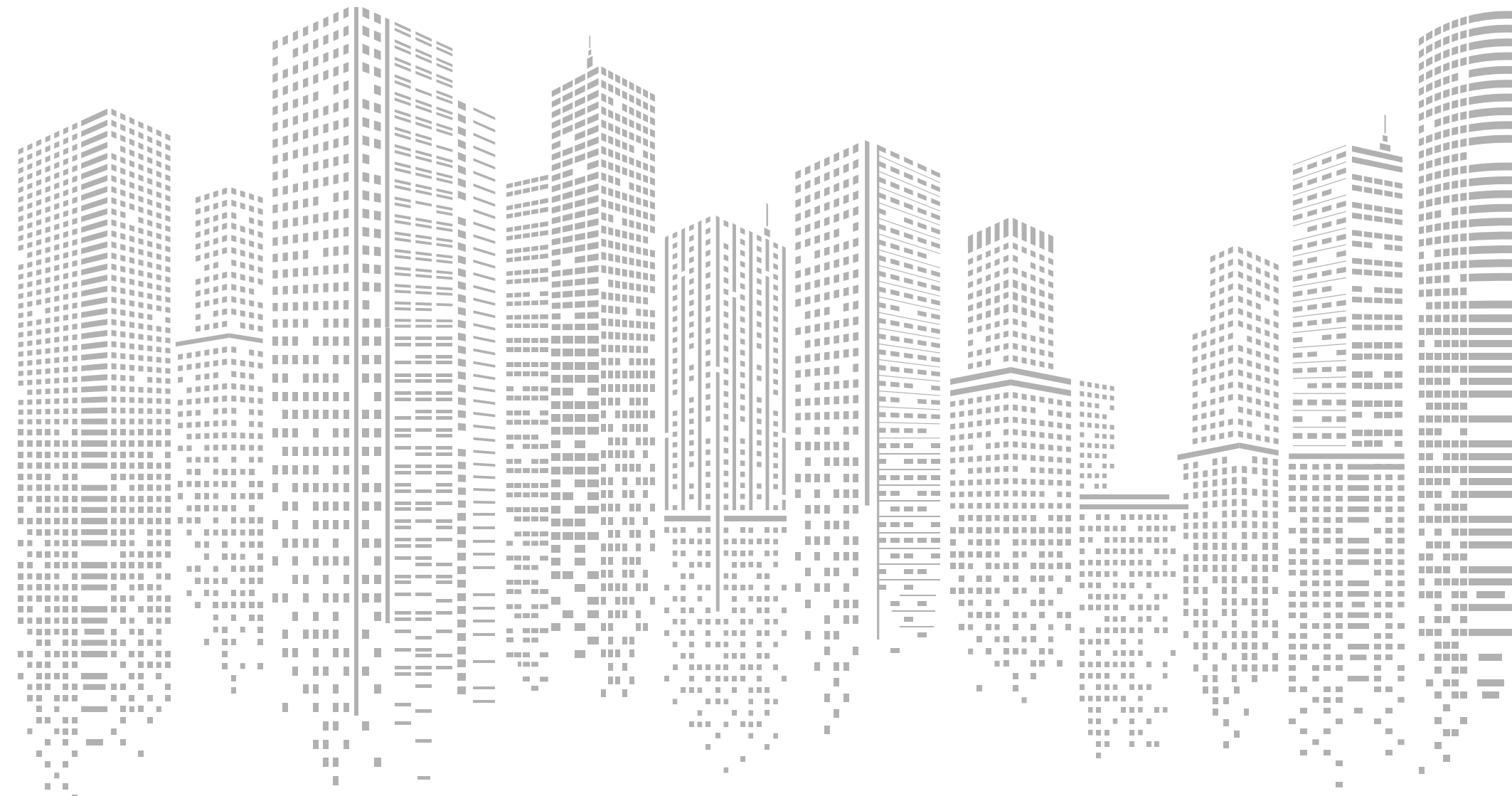
OUR STORY

Shevi Group is a company which can be credited to be among the premier Real Estate Developers who have laid down the foundation of modern Pune. Over the last decade, the Shevi Group has emerged a leading name in the Construction & Real Estate Industry with projects that span the residential & commercial spectrum all over Pune. Be it premium lifestyles or affordable luxury, Shevi Group projects easily meet, and even exceed, the expectations of our customers.

Our meticulous planning, maximum use of modern equipment and building technology, designs that optimize space and quality of interiors are integral factors in delivering high quality projects in time and within budget, making us the preferred choice of home buyers and real estate investors alike.



DREAM LIVE ACHIEVE



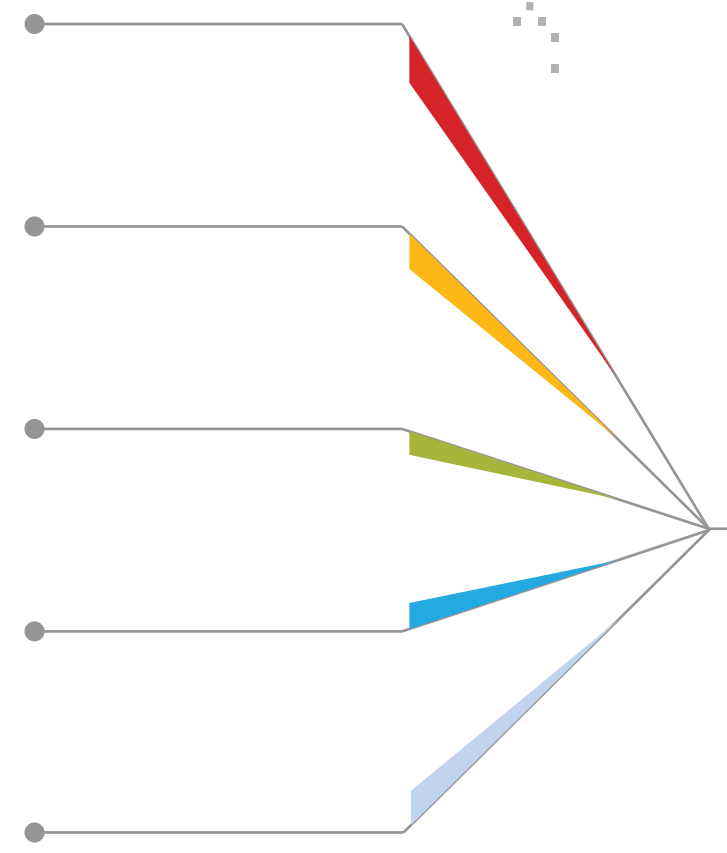
10,00,000
Sq. Ft. Built

2000
Satisfied Customers

15
Completed Projects

5
Upcoming Projects

2
Ongoing Projects



ATULYA
NIRMAN

1 & 2 BHK LUSH RESIDENCES
@ PUNAWALE





ENTER THE CODE
TO A WORLD OF
EXCLUSIVE LUXURY.



THE CODE
FOR THE
CHOSEN
FEW



SEEK
THE
FINEST.
AND
GET IT.



SUPER-EXCLUSIVE
ULTRA-LUXURY
RESIDENCE BY
SHEVI GROUP





EXPERIENCE
THE LUXURY
OF LESS.





LIVE THE
GOOD LIFE.



STEP INTO THE EPICENTRE OF THE EXCEPTIONAL



Fitness Center



Designer POP False Ceiling in living area



Free open spaces



Experience the pleasure of Sunrise and Sunset



Genset backup in all flats



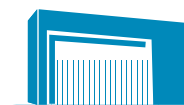
Video door phone



Intercom facility



Solar water heater system

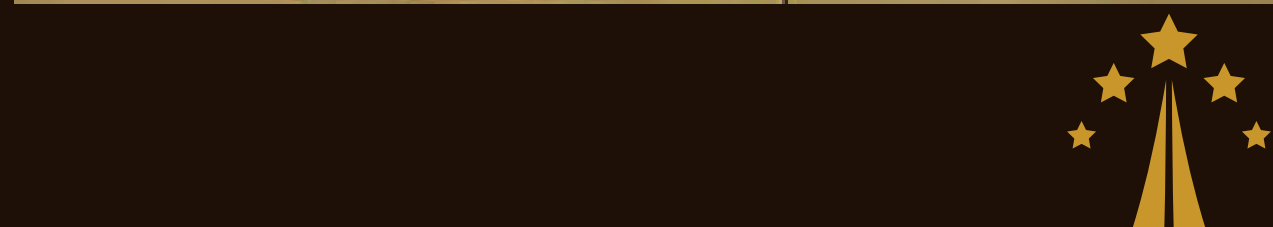


Designer entrance gate

APARTMENTS
THAT REDEFINE
THE LANGUAGE
OF LUXURY



MINGLE
WITH
THE STARS.





1 BHK - CUT SECTION

- A.** ----- Entrance
- B.** ----- Living
- C.** ----- Terrace
- D.** ----- Kitchen
- E.** ----- Bedroom
- F.** ----- Common Toilet



2 BHK - CUT SECTION

- A. ----- Entrance
- B. ----- Living/Dinning
- C. ----- Terrace
- D. ----- Kitchen
- E. ----- Dry Balcony
- F. ----- Bedroom
- G. ----- Master Bedroom
- H. ----- Attached Toilet
(Attached to Bedroom)
- I. ----- Common Toilet

SPECIFICATION

WALL INTERNAL & EXTERNAL

Internal wall plastered and painted with oil bond distemper

External walls with semi acrylic paints

All bathrooms - Ceramic tiles from floor to ceiling or up to 7' ft height

POP in living room

FLOOR

Living room, dining room, bedroom, and kitchen with 24" x 24" vitrified tiles

TERRACE

Wooden finish flooring in master bedroom terrace & living terrace

Glass-wall for terrace

Provision for washing machine electric point

WINDOWS

Powder coated aluminium framed sliding windows with mosquito net and M. S. Safety grills

DOOR

Main entrance door- Waterproof plywood frames with commercial flush doors

All bedrooms - Waterproof plywood frames with commercial flush doors and bathroom marble frame with FRP doors

Balcony and terrace - Powder coated aluminum frame with fixed glass sliding doors and SS glass railings

FITTINGS

C.P. fittings of Jaguar, Hindware or equivalent quality

BATHROOMS

Designer bathrooms

Provision of extra water storage tank in bathroom

Separate water storage for bore water

Exhaust fan provision

KITCHEN

Polished granite kitchen counter top

Stainless steel sink

Two water taps in kitchen

A) Drinking water B) Common water

Exhaust fan provision

SAFETY

State of the art fire fighting system in common areas

ELECTRICAL

Concealed wiring

Anchor switches

Cable TV, Telephone and AC Points

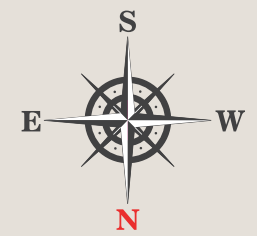
WING - A



1 & 2 BHK LUSH RESIDENCES
@ PUNAWALE



TYPICAL FLOOR PLAN
1ST & 3RD FLOOR PLAN



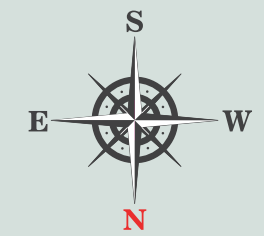
WING - A



1 & 2 BHK LUSH RESIDENCES
@ PUNAWALE



TYPICAL FLOOR PLAN
2ND FLOOR PLAN



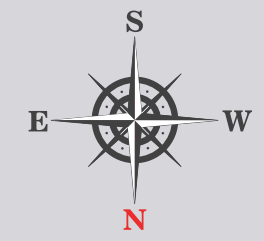
WING - A



1 & 2 BHK LUSH RESIDENCES
@ PUNAWALE



TYPICAL FLOOR PLAN
4TH FLOOR PLAN



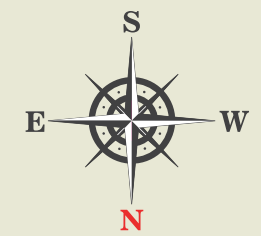
WING - A



1 & 2 BHK LUSH RESIDENCES
@ PUNAWALE



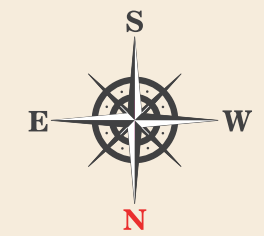
TYPICAL FLOOR PLAN
5TH FLOOR PLAN



WING - B



1 & 2 BHK LUSH RESIDENCES
@ PUNAWALE

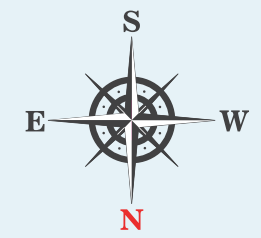


TYPICAL FLOOR PLAN
1ST FLOOR PLAN

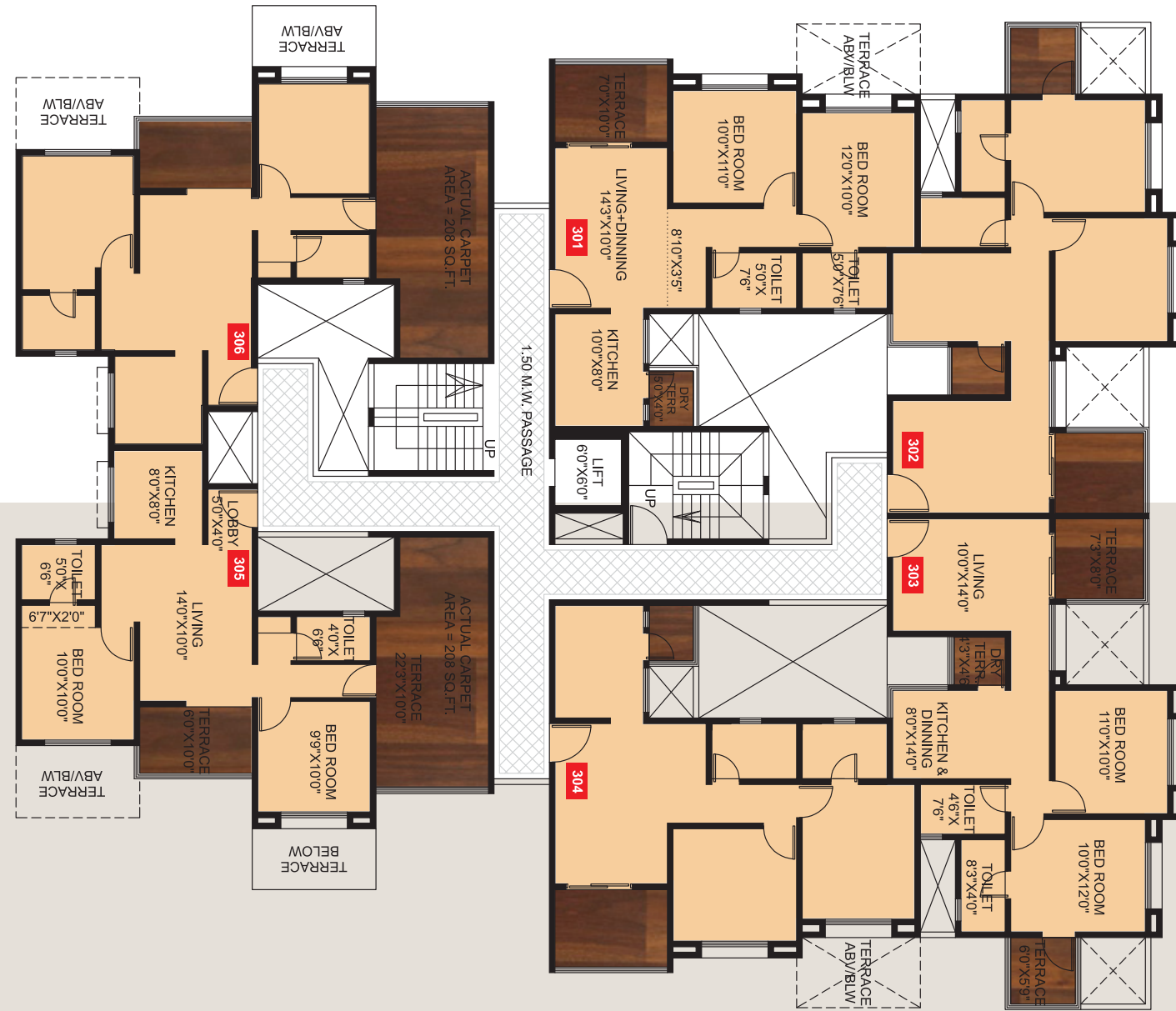
WING - B



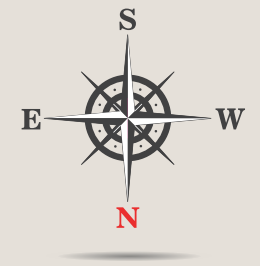
TYPICAL FLOOR PLAN
2ND FLOOR PLAN



WING - B



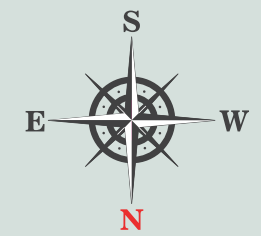
TYPICAL FLOOR PLAN
3RD FLOOR PLAN



WING - B



TYPICAL FLOOR PLAN
4TH FLOOR PLAN



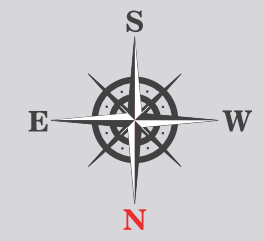
WING - B



1 & 2 BHK LUSH RESIDENCES
@ PUNAWALE



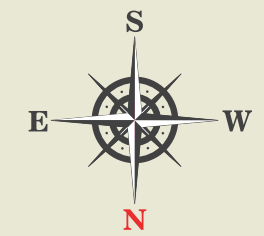
TYPICAL FLOOR PLAN
5TH FLOOR PLAN



WING - B



TYPICAL FLOOR PLAN
6TH FLOOR PLAN



NEARBY PLACES

Vibgyor International School	12 km
Aditya Birla Hospital	8.5 km
Kusum Memorial Hospital	03 km
Pune Airport	28 km
Akurdi Railway Station	06 km
Mumbai- Bengaluru Hwy	02 km
Wakad	05 km
Aundh	15 km
Jai Ganesh Fame	08 km
E Square Hinjewadi	06 km
Hotel Ginger	5.5 km
Hotel Sayaji	6.5 km
Hotel Mezza 9	8.5 km
IT Office Akurdi	6.5 km
PCMC	13 km
PCNTDA	06 km
SBI Wakad	07 km
D Mart	05 km
Big Bazaar Hinjewadi	08 km
JSPM	04 km
DY Patil	4.5 km
Pune University	18 km
Lotus Bussiness School	02 km
Big Cinemas	10 km



1 & 2 BHK LUSH RESIDENCES
@ PUNAWALE



atulya
NIRMAN

1 & 2 BHK LUSH RESIDENCES
@ PUNAWALE

Project By



Site Address : Sr. No. 18/3 & 18/4, Near DSK Kunjban, Kate Vasti, Punawale - 411033

CALL : 9579 237 237

Corporate Office : D Ward 2/1, Behind Punjabi Gurudwara, Near Sai Chowk, Pimpri, Pune - 411017.

This Brochure is purely conceptual and not a legal offering. No of floor(s) may be revised in light of amendment in Development Control rules.
The Developers reserve right to amend the layout, plans, elevations, specifications and amenities.

www.shevigroup.com



Rera Reg. No.
P52100017797